

J1

APARTMENTS



J1 ONE BEDROOM APARTMENTS

01. ENTRANCE HALL	2.05 m ²
02. LIVING ROOM WITH DINING	16.70 m ²
03. KITCHEN	3.10 m ²
04. BATHROOM	4.05 m ²
05. BEDROOM	9.10 m ²
06. TERRACE	4.20 m ²
TOTAL	39.20 m²



J2 ONE BEDROOM APARTMENTS

01. ENTRANCE HALL	2.70 m ²
02. LIVING ROOM WITH DINING	17.80 m ²
03. KITCHEN	3.35 m ²
04. BATHROOM	4.85 m ²
05. BEDROOM	9.20 m ²
06. TERRACE	4.15 m ²
TOTAL	42.05 m²

APARTMENTS

J2

J3



APARTMENTS

**J3 ONE BEDROOM APARTMENTS**

01. ENTRANCE HALL	4.45 m ²
02. LIVING ROOM WITH DINING	15.50 m ²
03. KITCHEN	4.00 m ²
04. BATHROOM	3.85 m ²
05. BEDROOM	9.80 m ²
06. TERRACE	4.20 m ²
TOTAL	41.80 m²

**J4 ONE BEDROOM APARTMENTS**

01. ENTRANCE HALL	2.90 m ²
02. LIVING ROOM WITH DINING	13.80 m ²
03. KITCHEN	3.65 m ²
04. BATHROOM	4.30 m ²
05. BEDROOM	10.85 m ²
06. TERRACE	4.35 m ²
TOTAL	39.85 m²

APARTMENTS

J4

J5



APARTMENTS



J5 ONE BEDROOM APARTMENTS

01. ENTRANCE HALL	2.35 m ²
02. LIVING ROOM WITH DINING	17.70 m ²
03. KITCHEN	3.80 m ²
04. BATHROOM	4.95 m ²
05. BEDROOM	9.25 m ²
06. TERRACE	4.35 m ²
TOTAL	42.40 m²



J6 ONE BEDROOM APARTMENTS

01. ENTRANCE HALL	3.35 m ²
02. LIVING ROOM WITH DINING	15.90 m ²
03. KITCHEN	3.80 m ²
04. BATHROOM	4.15 m ²
05. BEDROOM	9.10 m ²
06. TERRACE	4.20 m ²
TOTAL	40.05 m²

APARTMENTS

J6

J7

APARTMENTS

**J7 ONE BEDROOM APARTMENTS**

01. ENTRANCE HALL	3.50 m ²
02. LIVING ROOM WITH DINING	17.25 m ²
03. KITCHEN	4.15 m ²
04. BATHROOM	4.15 m ²
05. BEDROOM	9.60 m ²
06. TERRACE	16.65 m ²

TOTAL 55.30 m²

**J8 ONE BEDROOM APARTMENTS**

01. ENTRANCE HALL	2.90 m ²
02. LIVING ROOM WITH DINING	13.80 m ²
03. KITCHEN	3.65 m ²
04. BATHROOM	4.30 m ²
05. BEDROOM	10.85 m ²
06. TERRACE	18.36 m ²

TOTAL 53.86 m²

APARTMENTS

J8



J9 ONE BEDROOM APARTMENTS

01. ENTRANCE HALL	2.35 m ²
02. LIVING ROOM WITH DINING	17.70 m ²
03. KITCHEN	3.80 m ²
04. BATHROOM	4.95 m ²
05. BEDROOM	9.25 m ²
06. TERRACE	18.36 m ²

TOTAL 54.41 m²



J10 ONE BEDROOM APARTMENTS

01. ENTRANCE HALL	3.35 m ²
02. LIVING ROOM WITH DINING	15.90 m ²
03. KITCHEN	3.80 m ²
04. BATHROOM	4.15 m ²
05. BEDROOM	9.10 m ²
06. TERRACE	16.65 m ²

TOTAL 52.95 m²

D1

APARTMENTS

**D1 TWO BEDROOM APARTMENTS**

01. ENTRANCE HALL	3.25 m ²
02. KITCHEN	4.30 m ²
03. LIVING ROOM WITH DINING	31.00 m ²
04. BATHROOM	5.35 m ²
05. TOILET	1.80 m ²
06. BEDROOM	9.40 m ²
07. BEDROOM	10.15 m ²
08. TERRACE	7.47 m ²
TOTAL	72.72 m²

**D2 TWO BEDROOM APARTMENTS**

01. ENTRANCE HALL	1.90 m ²
02. LIVING ROOM WITH DINING	15.10 m ²
03. KITCHEN	3.75 m ²
04. HALL	4.70 m ²
05. TOILET	1.45 m ²
06. BATHROOM	3.50 m ²
07. BEDROOM	5.00 m ²
08. BEDROOM	8.85 m ²
09. TERRACE	6.93 m ²
TOTAL	51.18 m²

APARTMENTS

D2

D3



APARTMENTS

**D3 TWO BEDROOM APARTMENTS**

01. ENTRANCE HALL	2.40 m ²
02. KITCHEN	3.35 m ²
03. LIVING ROOM WITH DINING	17.80 m ²
04. BATHROOM	4.45 m ²
05. BEDROOM	9.20 m ²
06. BEDROOM	8.85 m ²
07. TERRACE	4.15 m ²

TOTAL 50.70 m²

**D4 TWO BEDROOM APARTMENTS**

01. ENTRANCE HALL	1.90 m ²
02. LIVING ROOM WITH DINING	23.80 m ²
03. KITCHEN	4.80 m ²
04. TOILET	1.70 m ²
05. BATHROOM	3.90 m ²
06. BEDROOM	8.70 m ²
07. BEDROOM	10.75 m ²
08. TERRACE	57.93 m ²
09. TERRACE	3.22 m ²

TOTAL 118.75 m²

APARTMENTS

D4

D5



APARTMENTS

**D5 TWO BEDROOM APARTMENTS**

01. ENTRANCE HALL	3.10 m ²
02. KITCHEN	5.00 m ²
03. LIVING ROOM WITH DINING	23.50 m ²
04. TOILET	1.60 m ²
05. BATHROOM	4.40 m ²
06. HALL	4.00 m ²
07. BEDROOM	10.00 m ²
08. BEDROOM	8.84 m ²
09. TERRACE	12.21 m ²
TOTAL	72.66 m²

**D6 TWO BEDROOM APARTMENTS**

01. ENTRANCE HALL	8.20 m ²
02. KITCHEN	4.65 m ²
03. LIVING ROOM WITH DINING	25.50 m ²
04. TOILET	1.65 m ²
05. BATHROOM	4.50 m ²
06. BEDROOM	9.95 m ²
07. BEDROOM	10.45 m ²
08. TERRACE	11.72 m ²
09. TERRACE	10.38 m ²
TOTAL	123.62 m²

APARTMENTS

D6

D7



APARTMENTS

**D7 TWO BEDROOM APARTMENTS**

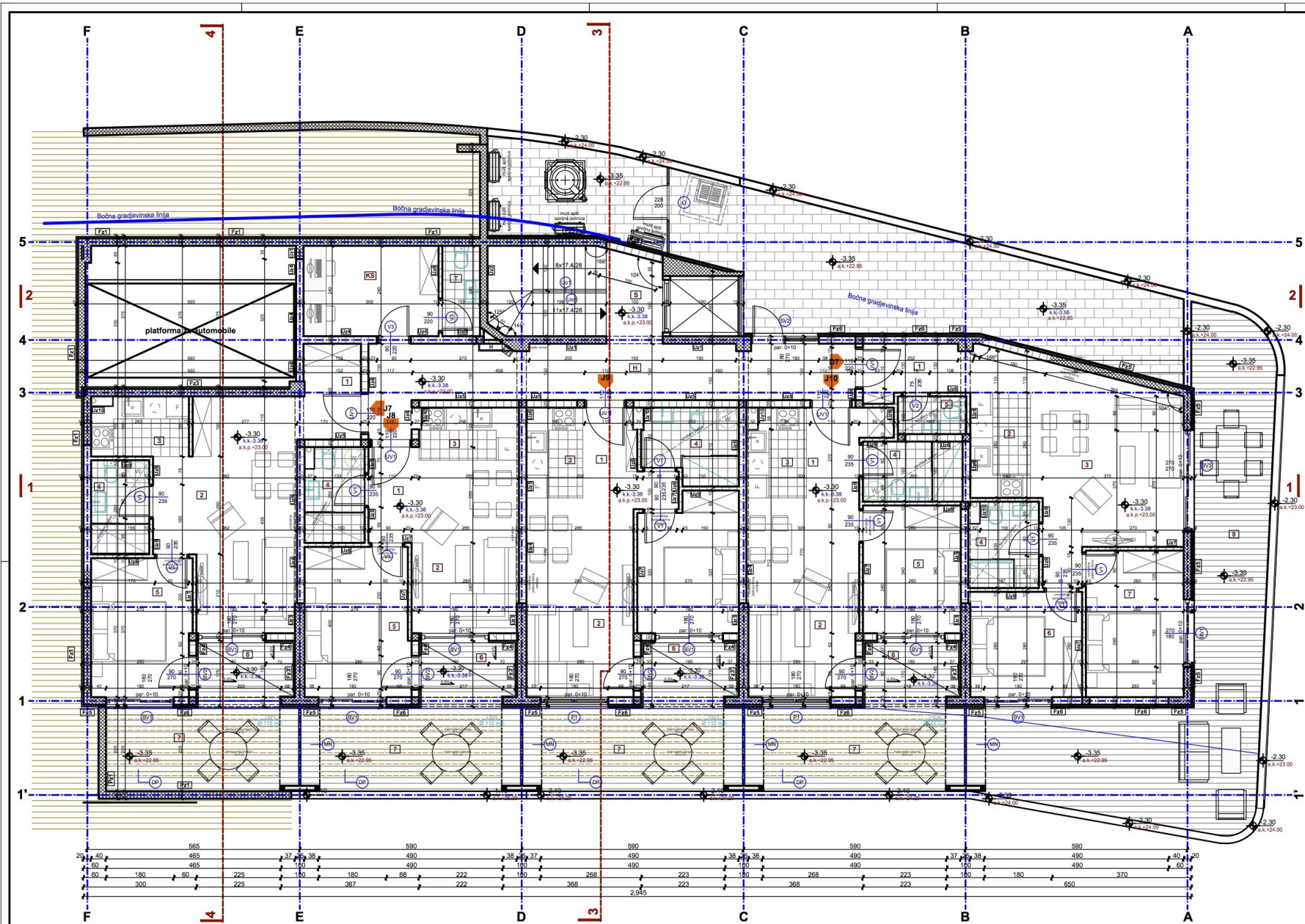
01. ENTRANCE HALL	4.25 m ²
02. KITCHEN	4.45 m ²
03. LIVING ROOM WITH DINING	21.90 m ²
04. BATHROOM	4.15 m ²
05. TOILET	1.50 m ²
07. BEDROOM	8.45 m ²
08. BEDROOM	9.60 m ²
09. TERRACE	45.48 m ²
TOTAL	99.78 m²

**D8 TWO BEDROOM APARTMENTS**

01. ENTRANCE HALL	4.25 m ²
02. KITCHEN	4.45 m ²
03. LIVING ROOM WITH DINING	21.90 m ²
04. BATHROOM	4.15 m ²
05. TOILET	1.50 m ²
06. BEDROOM	8.45 m ²
07. BEDROOM	9.60 m ²
08. TERRACE	7.45 m ²
TOTAL	61.85 m²

APARTMENTS

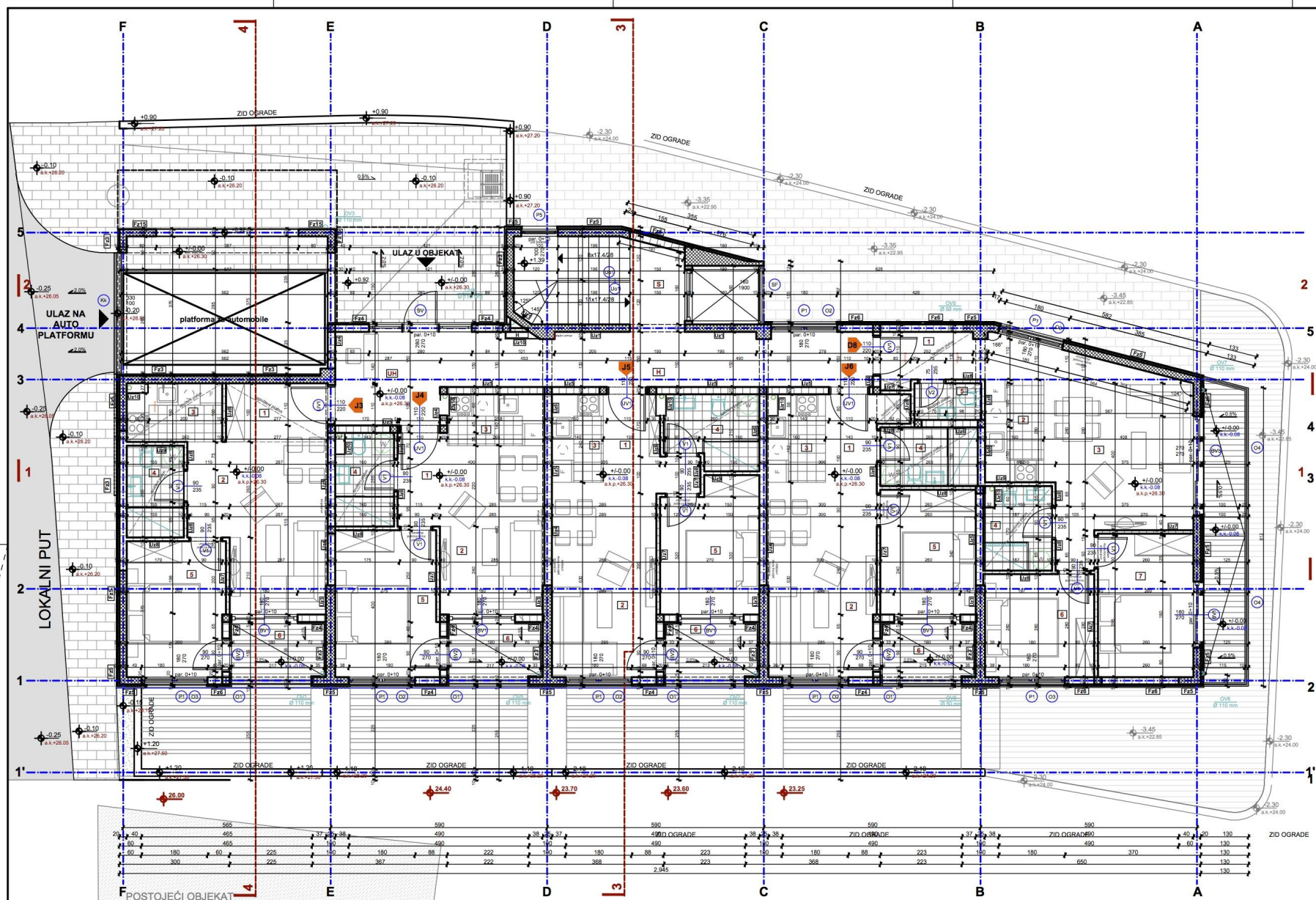
D8



LEGENDA

BR.	NAZIV PROSTORJE	Površina m ²	Obim m ³
JEDNOSOBNI STAN J8			
01	ULAZI HOL	2,90	7,40
02	DNEVNI BORAVAK I TRPEZARIJA	13,10	14,80
03	KUHINJA	3,65	8,10
04	KUPATILO	3,90	8,30
05	SPAVAČA SOBA	11,15	13,17
06	BALKON	4,15	8,40
07	DVORIŠTE	13,00	-
STAN J8 - ukupna NETO površina		38,85 +13,00 (dvorište)	
JEDNOSOBNI STAN J9			
01	ULAZI HOL	2,95	6,50
02	DNEVNI BORAVAK I TRPEZARIJA	17,30	20,10
03	KUHINJA	3,35	7,60
04	KUPATILO	4,65	9,40
05	SPAVAČA SOBA	9,55	13,00
06	BALKON	4,15	8,40
07	DVORIŠTE	13,00	-
STAN J9 - ukupna NETO površina		41,75+13,00 (dvorište)	
JEDNOSOBNI STAN J10			
01	ULAZI HOL	4,10	9,50
02	DNEVNI BORAVAK I TRPEZARIJA	15,60	16,60
03	KUHINJA	3,65	8,00
04	KUPATILO	4,25	8,50
05	SPAVAČA SOBA	8,65	12,00
06	BALKON	4,15	8,40
07	DVORIŠTE	13,00	-
STAN J10 - ukupna NETO površina		40,60+13,00 (dvorište)	
JEDNOSOBNI STAN J7			
01	ULAZI HOL	3,90	8,20
02	DNEVNI BORAVAK I TRPEZARIJA	20,15	22,75
03	KUHINJA	4,00	8,40
04	KUPATILO	3,85	8,10
05	SPAVAČA SOBA	9,80	12,80
06	BALKON	4,20	8,45
07	DVORIŠTE	13,00	-
STAN J7 - ukupna NETO površina		45,90+13,00 (dvorište)	
DVOSOBNI STAN D7			
01	ULAZI HOL	3,90	8,90
02	KUHINJA	4,50	8,80
03	DNEVNI BORAVAK I TRPEZARIJA	21,00	23,10
04	KUPATILO	4,10	8,35
05	TOALET	1,80	5,65
06	SPAVAČA SOBA 1	8,35	11,65
07	SPAVAČA SOBA 2	10,15	13,00
08	DVORIŠTE	41,00	-
STAN D7 - ukupna NETO površina		53,80+42,00 (dvorište)	
KS	KONTAKTNA SOBA	8,60	12,70
T	TOALET	2,40	6,80
S	STEPENIŠTE	11,60	13,00
H	HODNIK	20,20	30,20

OSNOVA SUTERENA



LEGENDA

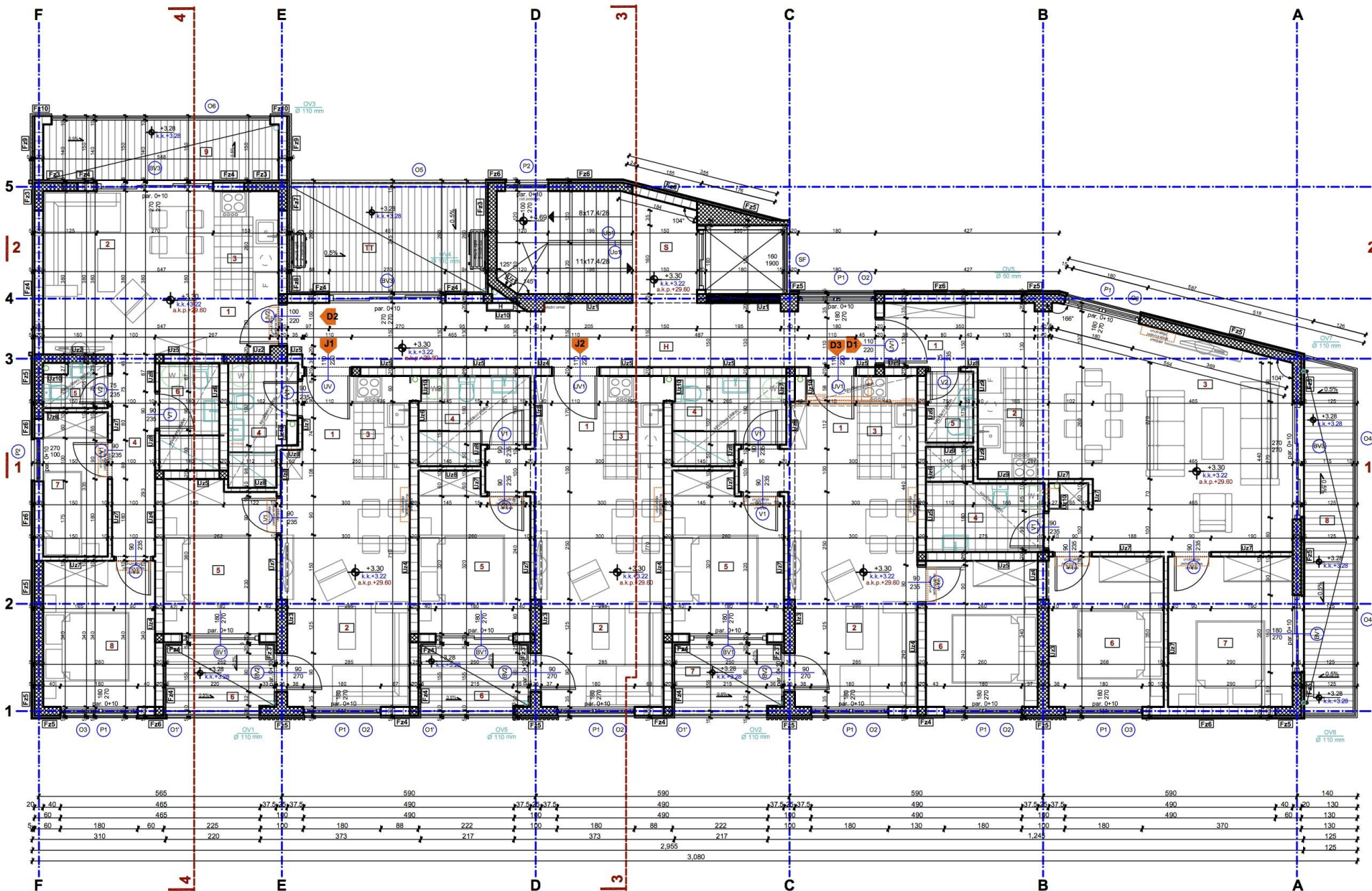
BR.	NAZIV PROSTORJE	Površina m ²	Obim m
JEDNOSOBNI STAN J3			
01	ULAZI HOL	4.45	8.75
02	DNEVNI BORAVAK I TRPEZARJA	15.50	17.05
03	KUHINJA	4.00	6.45
04	KUPATILO	3.85	8.10
05	SPAVAĆA SOBA	9.80	12.80
06	BALKON	4.20	8.45
STAN J3 - ukupna NETO površina		41.80	
JEDNOSOBNI STAN J4			
01	ULAZI HOL	2.90	7.40
02	DNEVNI BORAVAK I TRPEZARJA	13.10	14.90
03	KUHINJA	3.65	8.10
04	KUPATILO	3.90	8.30
05	SPAVAĆA SOBA	11.15	13.77
06	BALKON	4.15	8.40
STAN J4 - ukupna NETO površina		38.85	
JEDNOSOBNI STAN J5			
01	ULAZI HOL	2.55	6.50
02	DNEVNI BORAVAK I TRPEZARJA	17.30	20.10
03	KUHINJA	3.35	7.60
04	KUPATILO	4.85	9.40
05	SPAVAĆA SOBA	9.55	13.00
06	BALKON	4.15	8.40
STAN J5 - ukupna NETO površina		41.75	
JEDNOSOBNI STAN J6			
01	ULAZI HOL	4.10	9.50
02	DNEVNI BORAVAK I TRPEZARJA	15.60	16.60
03	KUHINJA	3.65	8.00
04	KUPATILO	4.25	8.50
05	SPAVAĆA SOBA	8.80	12.00
06	BALKON	4.15	8.40
STAN J6 - ukupna NETO površina		40.60	
DVOSOBNI STAN D8			
01	ULAZI HOL	3.90	8.90
02	KUHINJA	4.50	8.90
03	DNEVNI BORAVAK I TRPEZARJA	21.00	23.10
04	KUPATILO	4.10	8.35
05	TOALET	1.80	5.65
06	SPAVAĆA SOBA 1	8.35	11.65
07	SPAVAĆA SOBA 2	10.15	13.00
08	TERASA	10.10	13.00
STAN D8 - ukupna NETO površina		63.90	
UH. ULAZNI HOL		11.40	16.25
S. STERENISITE		11.00	13.90
H. HODNIK		13.40	21.40

OSNOVA PRIZEMLJA



LEGENDA

BR.	NAZIV PROSTORIJE	Površina m ²	Obim m'
JEDNOSOBNI STAN J1			
01	ULAZI HOL	2.05	5.85
02	DNEVNI BORAVAK I TRPEZARIJA	16.70	17.95
03	KUHINJA	3.10	7.40
04	KUPATILO	4.05	9.05
05	SPAVAČA SOBA	9.10	12.45
06	BALKON	4.20	8.45
STAN J1 - ukupna NETO površina		39.20	
JEDNOSOBNI STAN J2			
01	ULAZI HOL	2.70	6.60
02	DNEVNI BORAVAK I TRPEZARIJA	17.80	20.30
03	KUHINJA	3.35	7.60
04	KUPATILO	4.85	9.40
05	SPAVAČA SOBA	9.20	12.85
06	BALKON	4.15	8.40
STAN J2 - ukupna NETO površina		42.05	
DVOSOBNI STAN D1			
01	ULAZI HOL	3.25	7.35
02	KUHINJA	4.30	8.50
03	DNEVNI BORAVAK I TRPEZARIJA	31.00	28.60
04	KUPATILO	5.35	10.40
05	TOALET	1.80	5.50
06	SPAVAČA SOBA 1	9.40	12.45
07	SPAVAČA SOBA 2	10.15	12.85
08	TERASA	10.10	13.00
STAN D1 - ukupna NETO površina		75.35	
DVOSOBNI STAN D2			
01	ULAZI HOL	1.90	5.60
02	DNEVNI BORAVAK I TRPEZARIJA	15.10	15.55
03	KUHINJA	3.75	8.90
04	DEGAŽMAN	4.70	11.40
05	TOALET	1.45	5.10
06	KUPATILO	3.50	7.80
07	SPAVAČA SOBA 1	5.00	9.70
08	SPAVAČA SOBA 2	8.85	12.00
09	TERASA	8.12	14.30
STAN D2 - ukupna NETO površina		52.37	
DVOSOBNI STAN D3			
01	ULAZI HOL	2.40	6.50
02	DNEVNI BORAVAK I TRPEZARIJA	17.80	20.30
03	KUHINJA	3.35	7.60
04	KUPATILO	4.95	9.50
05	SPAVAČA SOBA 1	9.20	12.80
06	SPAVAČA SOBA 2	8.85	12.00
07	BALKON	4.15	8.40
STAN D3 - ukupna NETO površina		50.70	
S	STEPENIŠTE	11.00	13.90
H	HODNIK	20.20	33.80
TT	TEHNIČKA TERASA	11.75	13.10
UKUPNO NETO PVRŠINA PRVOG SPRATA			
UKUPNA PRODAJNA PVRŠINA PRVOG SPRATA			
UKUPNA BRUTO PVRŠINA PRVOG SPRATA			

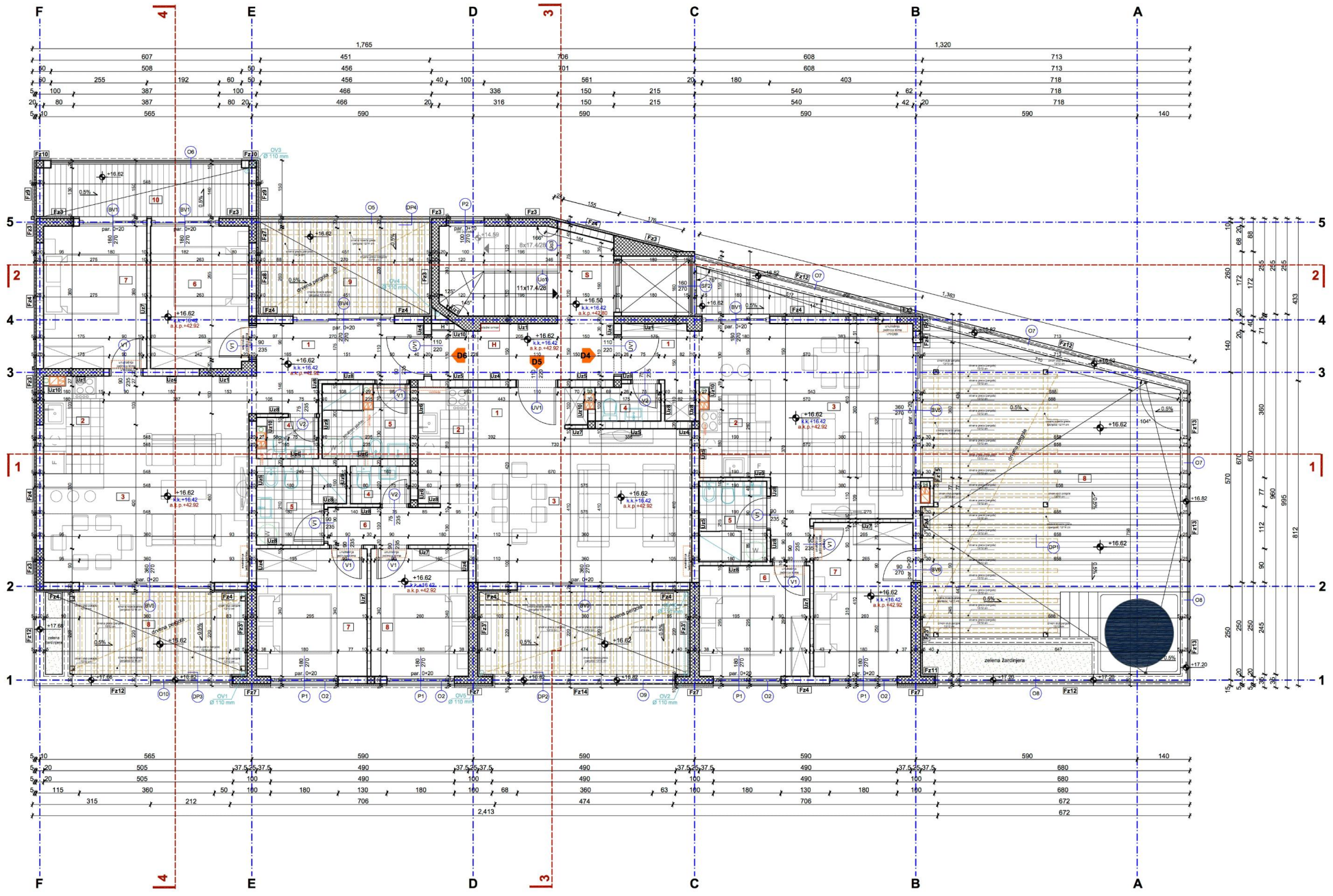


OSNOVA 1., 2., 3., 4. SPRATA



LEGENDA

BR.	NAZIV PROSTORJE	Površina m ²	Obim m
DVOBOJNI STAN D4			
01	ULAZI HOL	3,90	9,35
02	KUHINJA	4,40	9,55
03	DNEVNI BORAVAK I TRPEZARIJA	23,90	24,00
04	TOALET	1,70	5,50
05	KUPATILO	3,90	7,90
06	SPAVAČA SOBA 1	8,70	11,40
07	SPAVAČA SOBA 2	10,75	13,70
08	TERASA	44,00	-
STAN D4 - ukupna NETO površina		97,60+64,00	
DVOBOJNI STAN D5			
01	ULAZI HOL	3,10	8,00
02	KUHINJA	5,00	9,40
03	DNEVNI BORAVAK I TRPEZARIJA	23,50	19,70
04	TOALET	1,60	5,20
05	KUPATILO	4,40	9,00
06	DEGAŽMAN	4,00	10,00
07	SPAVAČA SOBA 1	10,00	12,70
08	SPAVAČA SOBA 2	8,85	12,00
09	TERASA	12,50	-
STAN D5 - ukupna NETO površina		60,45+12,50	
DVOBOJNI STAN D6			
01	ULAZI HOL	8,20	13,75
02	KUHINJA	4,65	9,20
03	DNEVNI BORAVAK I TRPEZARIJA	28,50	22,35
04	TOALET	1,65	6,00
05	KUPATILO	4,50	10,00
06	SPAVAČA SOBA 1	9,95	12,85
07	SPAVAČA SOBA 2	10,45	13,10
08	TERASA 1	14,00	-
09	TERASA 2	11,00	-
10	BALKON	8,92	-
STAN D6 - ukupna NETO površina		64,90 + 33,12	
S STEPENIŠTE		11,80	13,00
H HODNIK		7,19	13,00
UKUPNO NETO POVRŠINA 5. SPRATA			
UKUPNA PRODAJNA POVRŠINA 5. SPRATA			
UKUPNA BRUTO POVRŠINA 5. SPRATA			



OSNOVA 5.SPRATA